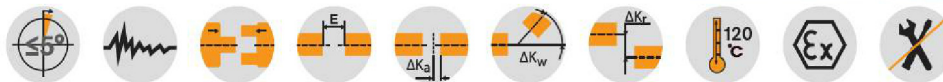


ROTEX® Standard Flexible jaw couplings

Material cast + powder metal



For legend of pictogram please refer to flapper on the cover



ROTEX® Sintered steel (Sint)																	
Size	Component	Spider (part 2) 1) Rated torque [Nm]			Dimensions [mm]												
					Finish bore d				General								Thread for setscrew
		92 Sh-A	98 Sh-A		L	l ₁ ; l ₂	E	b	s	D _H	d _H	D	N	G	t	T _A [Nm]	
14	1a	7,5	12,5		ungeb.: 8, 10, 11, 12, 14, 15, 16	35	11	13	10	1,5	30	10	30	M4	5	1,5	1,5
19	1a	10	17		ungeb., 14, 16, 19, 20, 22, 24	66	25	16	12	2,0	40	18	40	M5	10	2	2
24	1a	35	60		ungeb., Ø 24	78	30	18	14	2,0	56	27	40	M5	10	2	2

ROTEX® Aluminium diecast (Al-D)																		
Size	Component	Spider (part 2) 1) Rated torque [Nm]			Dimensions [mm]													
					Finish bore d (min-max)				General								Thread for setscrew	
		92 Sh-A	98 Sh-A	64 Sh-D	L	l ₁ ; l ₂	E	b	s	D _H	D _Z	d _H	D; D ₁	N	G	t	T _A [Nm]	
19	1	10	17	—	6-19	66	25	16	12	2	41	—	18	32	20	M5	10	2
	19-24				41													
24	1	35	60	—	9-24	78	30	18	14	2	56	—	27	40	24	M5	10	2
	22-28				56													
28	1	95	160	—	10-28	90	35	20	15	2,5	66	—	30	48	28	M8	15	10
	28-38				66													

ROTEX® Cast iron (GJL)																		
Size	Component	Spider (part 2) 1) Rated torque [Nm]			Dimensions [mm]													
					Finish bore d				General								Thread for setscrew	
					L	l ₁ ; l ₂	E	b	s	D _H	D _Z	d _H	D; D ₁	N	G	t	T _A [Nm]	
38	1	190	325	405	12-40	114	45	24	18	3	80	—	38	66	37	M8	15	10
	1a				38-48									78				
	1b				12-48									164				
42	1	265	450	560	14-45	126	50	26	20	3	95	—	46	75	40	M8	20	10
	1a				42-55									94				
	1b				14-55									176				
48	1	310	525	655	15-52	140	56	28	21	3,5	105	—	51	85	45	M8	20	10
	1a				48-62									104				
	1b				15-62									188				
55	1	410	685	925	20-60	160	65	30	22	4	120	—	60	98	52	M10	20	17
	1a				55-74									118				
65	1	825	940	1175	22-70	185	75	35	26	4,5	135	—	68	115	61	M10	20	17
75	1	1280	1920	2400	30-80	210	85	40	30	5	160	—	80	135	69	M10	25	17
90	1	2400	3600	4500	40-97	245	100	45	34	5,5	200	218	100	160	81	M12	30	40

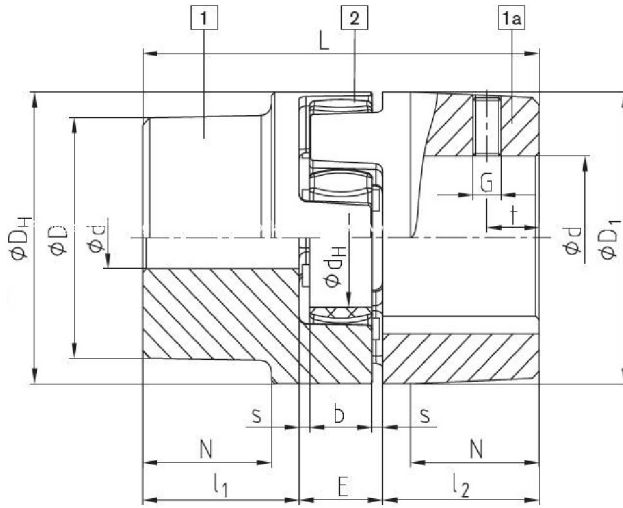
ROTEX® Nodular Iron (GJS)																		
Size	Component	Spider (part 2) 1) Rated torque [Nm]			Dimensions [mm]													
					Finish bore d				General								Thread for setscrew	
					L	l ₁ ; l ₂	E	b	s	D _H	D _Z	d _H	D; D ₁	N	G	t	T _A [Nm]	
100	1	3300	4950	6185	50-115	270	110	50	38	6	225	246	113	180	89	M12	30	40
110	1	4800	7200	9000	60-125	295	120	55	42	6,5	255	278	127	200	96	M16	35	80
125	1	6650	10000	12500	80-145	340	140	80	46	7	290	315	147	230	112	M16	40	80
140	1	8550	12800	16000	80-160	375	155	65	50	7,5	320	345	165	255	124	M20	45	140
160	1	12800	19200	24000	80-185	425	175	75	57	9	370	400	190	290	140	M20	50	140
180	1	18650	28000	35000	85-200	475	195	85	64	10,5	420	450	220	325	156	M20	50	140

■ = If no material is specified in the order, it is stipulated in the calculation/order.

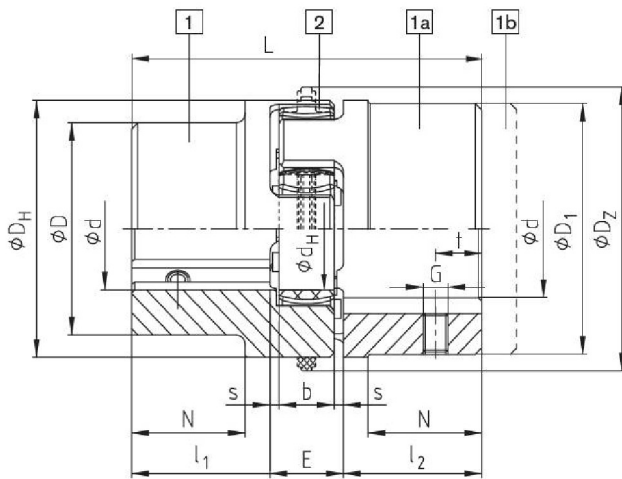
¹⁾ Maximum torque of the coupling T_{Kmax} = rated torque of the coupling T_{K rated} x 2. For selection see page 10 et seq.

Ordering example:	ROTEX® 38	GJL	92 Sh-A	1a	Ø 45	1	Ø 25
	Coupling size	Material	Spider hardness	Component	Finish bore	Component	Finish bore

Components

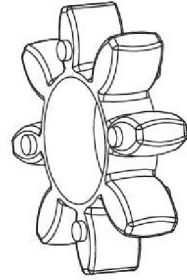


AL-D (thread opposite to the keyway)

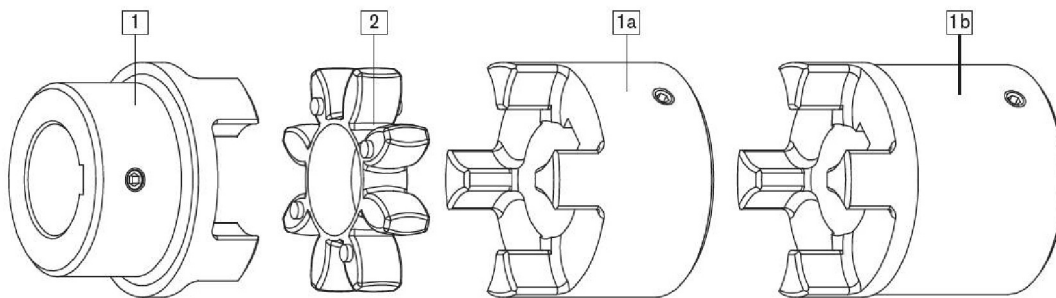
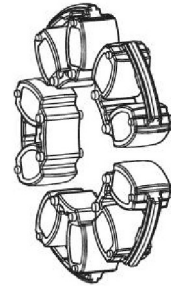


GJL / GJS (thread on the keyway)

Spider
Hardness 92Sh-A, 98Sh-A,
64Sh-D
Standard from size
14 - 180



Elements DZ
Hardness 92Sh-A and
98Sh-A size 100 - 180



Standard hub

Spider

Large hub

Large hub lengthened